



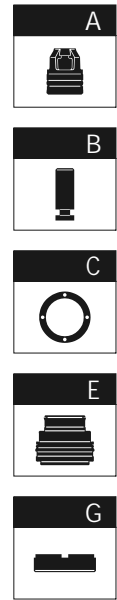
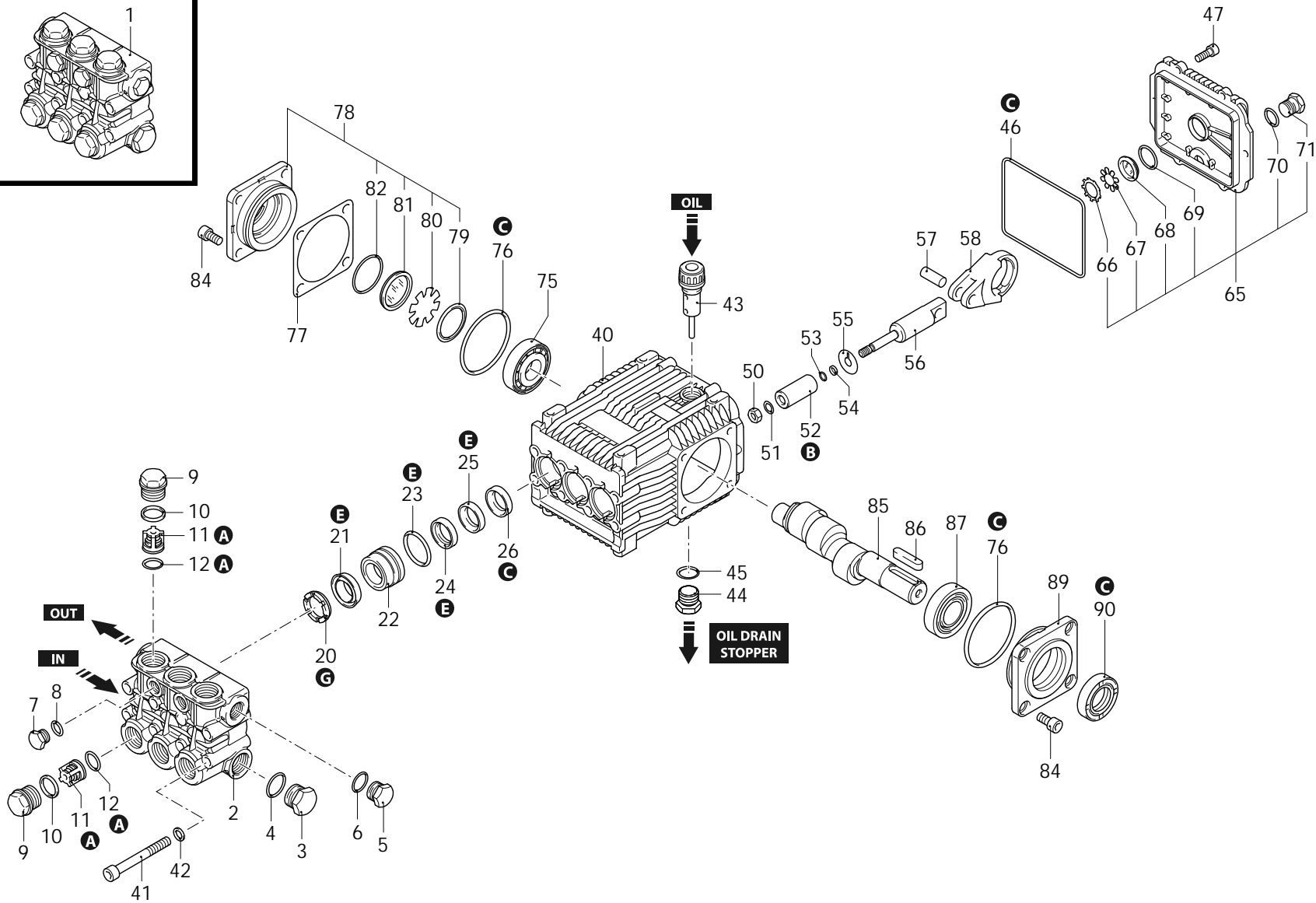
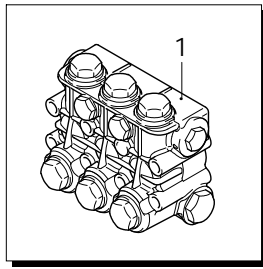
Series 228

RHW

N

950rpm

ø 24mm



AR-1\_000144\_v01

29/11/2021



Series 228  
RHW

N

950rpm

∅ 24mm

P	Code	Description	Q	Note	Validity	P	Code	Description	Q	Note	Validity
1	1389296	Head assembly	1	∅ 18		67	1780690	Plate	1		
2	1380680	Head	1	nickel plated		68	1260250	Level gauge	1		
3	960870	Plug	1	1/2" G nickel	Screw with Loxeal 55-14 / C=30Nm	69	1140450	O-ring	1	∅ 20,24x2,62	Lubricate with grease Molykote PG54
4	180101	O-ring	1	∅ 17,5x2	Lubricate with grease Molykote PG54	70	740290	O-ring	1	∅ 14x1,78	Lubricate with grease Molykote PG54
5	1981180	Plug	1	3/8" G nickel	Screw with Loxeal 55-14 / C=20Nm	71	1981180	Plug	1	3/8" G nickel	Screw with Loxeal 55-14 / C=20Nm
6	740290	O-ring	1	∅ 14x1,78	Lubricate with grease Molykote PG54	75	2280340	Bearing	1		
7	1380690	Plug	2	1/4" G nickel	Screw with Loxeal 55-14 / C=15Nm	76	640030	O-ring	2	∅ 59,99x2,62	
8	820510	O-ring	2	∅ 10,82x1,78		77	1380120	Shim 0.10mm	1		
9	1380740	Plug	6	nickel	Screw with Loxeal 55-14 / C=54Nm	77	1380130	Shim 0.19mm	1		
10	960160	O-ring	6	∅ 17,86x2,62	Lubricate with grease Molykote PG54	77	1380530	Shim 0.25mm	1		
11	1389051	Complete valve	6			77	1382810	Shim 0.05mm	1		
12	880833	O-ring	6	∅ 15,54x2,62	90 Sh	78	2349011	Cover	1		
20	960110	Ring	3	support ∅ 18		79	1941290	Ring	1		
21	2281730	Water seal	3	∅ 18 PTFE		80	1941260	Plate	1		
22	2281750	Piston guide	3	front ∅ 18		81	1941270	Level gauge	1		
23	961240	O-ring	3	∅ 31,47x1,78		82	100410	O-ring	1	∅ 34,6x2,62	
24	2281620	Gasket	3	∅ 18 PTFE		84	850370	Screw	8	TCEI M8x16	C=24,5Nm
25	2281740	Piston guide	3	rear ∅ 18		85	2280060	Shaft	1	1 marked	
26	880520	Ring	3	seal		86	1380520	Key	1		
40	2340260	Pump body	1			87	1383140	Bearing	1		
41	820150	Screw	8	TCEI M8x70		89	2340280	Support	1	open bearing	
42	1381850	Washer	8			90	2282260	Ring	1	seal	Assemble with tool [2281010]
43	880130	Plug	1			A	42328	Valve kit	1		
44	1981180	Plug	1	3/8" G nickel	Screw with Loxeal 55-14 / C=20Nm	B	2500	Piston kit	1	∅ 18	
45	740290	O-ring	1	∅ 14x1,78	Lubricate with grease Molykote PG54	C	1855	Oil seal kit	1		
46	1780510	O-ring	1	∅ 106x3		E	42329	Water seal kit	1	∅ 18	
47	1343510	Screw	6	TCEI M6x14	C=10Nm	G	1829	Support ring kit	1	∅ 18	
50	1260110	Nut	3	M8	Screw with Loxeal 55-14 / C=12Nm						
51	1260100	Washer	3								
52	1383230	Piston	3	∅ 18	Lubricate with grease Molykote PG54						
53	480480	O-ring	3	∅ 4,48x1,78							
54	1080550	Ring	3	anti-extrusion							
55	1383350	Plate	3								
56	1383240	Piston	3	guide							
57	1380060	Pin	3								
58	1383020	Connecting-rod	3	bronze							
65	2349012	Cover	1								
66	1260430	Ring	1								

Revision: 1

Oil type: ISO VG220

Attachment:

Date: 29/11/2021

Oil quantity: 0,435 Kg

*C=Tightening torque (Tolerance +0 ÷ -10%)*