



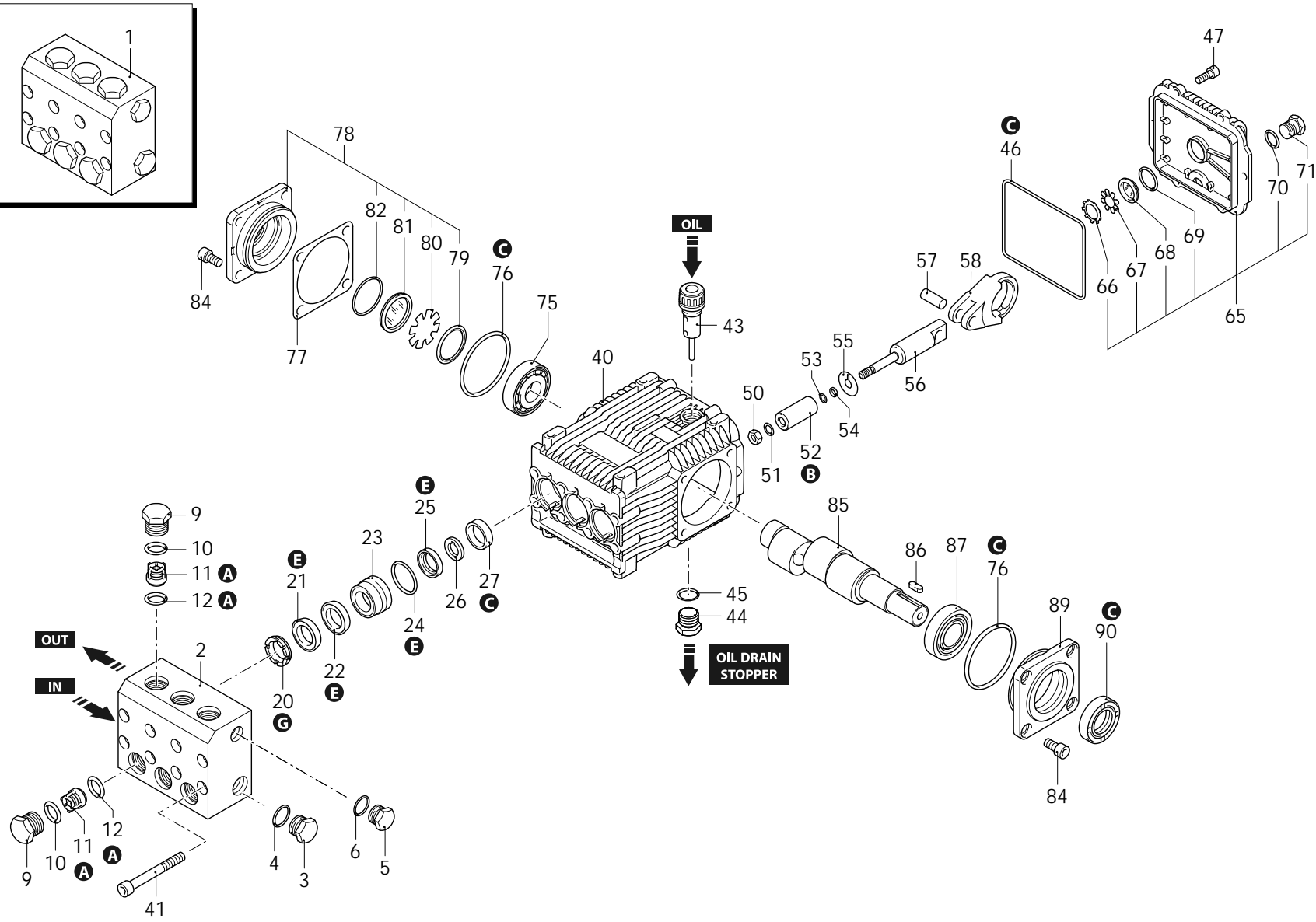
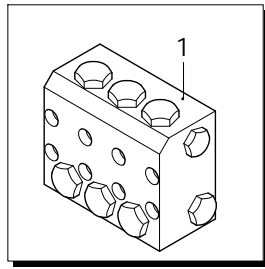
Series Stainless Steel

# RK-SS

# N

# 1450rpm

# ø 24mm



- A**
- B**
- C**
- E**
- G**

AR-1\_000105\_v01

29/11/2021



Series Stainless Steel

RK-SS

N

1450rpm

Ø 24mm

P	Code	Description	Q	Note	Validity	P	Code	Description	Q	Note	Validity
1	2349203	Head assembly	1			69	1140450	O-ring	1	Lubricate with grease Molykote PG54	
2	2340370	Head	1			70	740290	O-ring	1	Lubricate with grease Molykote PG54	
3	2340360	Plug	1	C=30Nm		71	2340350	Plug	1	C=20Nm	
4	180102	O-ring	1			75	2280340	Bearing	1		
5	2340350	Plug	1	C=20Nm		76	640030	O-ring	2		
6	740291	O-ring	1			77	1380130	Shim 0.19mm	1		
9	2340030	Plug	6	Screw with Loxeal 55-14 / C=54Nm		78	2349011	Cover	1		
10	960161	O-ring	6			79	1941290	Ring	1		
11	2349050	Complete valve	6			80	1941260	Plate	1		
12	880831	O-ring	6			81	1941270	Level gauge	1		
20	960110	Ring	3			82	100410	O-ring	1		
21	880321	Water seal	3	Lubricate with grease Molykote PG54		84	2340240	Screw	8	Screw with Loxeal 55-14 / C=20Nm	
22	2340310	Ring	3			85	2280060	Shaft	1		
23	2340140	Piston guide	3	Lubricate with grease Molykote PG54		86	1380520	Key	1		
24	961241	O-ring	3			87	1383140	Bearing	1		
25	880331	Gasket	3	Lubricate with grease Molykote PG54		89	2340280	Support	1	open bearing	
26	2340110	Spacer	3			90	2282260	Ring	1	seal	Assemble with tool [2281010]
27	880520	Ring	3			A	2514	Valve kit	1		
40	2340260	Pump body	1			B	2515	Piston kit	1	Ø 18	
41	1383440	Screw	8	C=20Nm		C	2528	Oil seal kit	1		
43	880130	Plug	1			E	2516	Water seal kit	1	Ø 18 Viton	
44	2340350	Plug	1	C=20Nm		G	1829	Support ring kit	1	Ø 18	
45	740290	O-ring	1	Lubricate with grease Molykote PG54							
46	1780510	O-ring	1								
47	2340250	Screw	6	C=7Nm							
50	2340060	Nut	3	Screw with Loxeal 55-14 / C=10Nm							
51	2340200	Washer	3								
52	1383230	Piston	3	Lubricate with grease Molykote PG54							
53	480482	O-ring	3								
54	1080550	Ring	3								
55	2340190	Plate	3								
56	1383240	Piston	3								
57	1380060	Pin	3								
58	1383020	Connecting-rod	3								
65	2349010	Cover	1								
66	1260430	Ring	1								
67	1780690	Plate	1								
68	1260250	Level gauge	1								

Revision: 1

Oil type: SAE 75W90

Attachment:

Date: 29/11/2021

Oil quantity: 0,415 Kg

*C=Tightening torque (Tolerance +0 ÷ -10%)*

20960 - RK-SS 15.15 N