



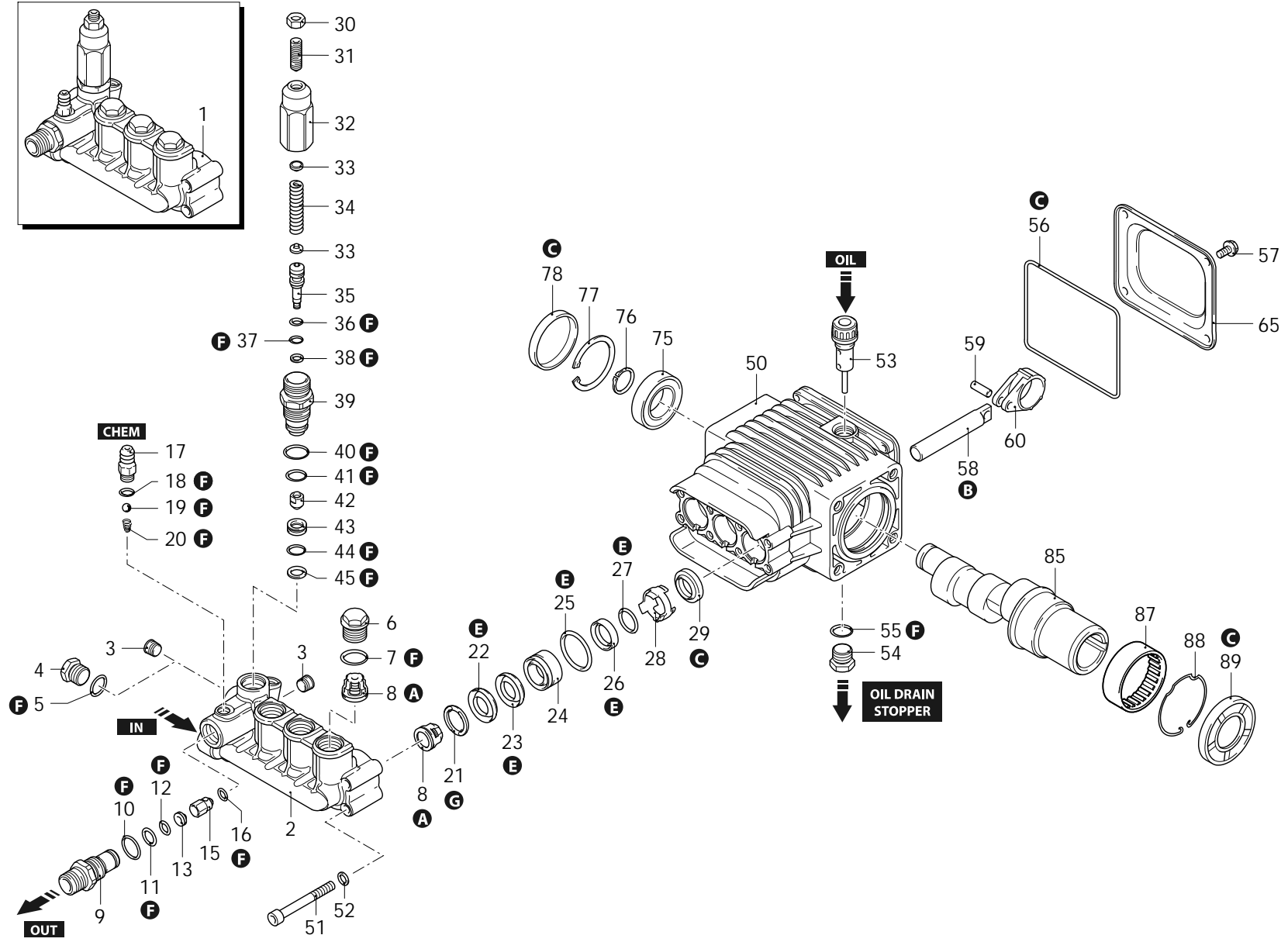
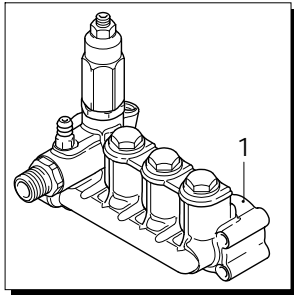
Series 276

RSS

C

2800rpm

ø 28mm



AR-1_000009_v01

29/11/2021



Series 276

RSS

C

2800rpm

ø 28mm

P	Code	Description	Q	Note	Validity	P	Code	Description	Q	Note	Validity
1	2769226	Head assembly	1			40	1200690	O-ring	1	Lubricate with grease Molykote PG54	
2	2760330	Head	1			41	394280	O-ring	1	Lubricate with grease Molykote PG54	
3	2760260	Plug	2	Screw with Loxeal 55-14		42	2260070	Shutter	1	Screw with Loxeal 55-14 / C=3Nm	
4	880581	Plug	1	Screw with Loxeal 55-14 / C=15Nm		43	2760980	Seat	1		
5	820510	O-ring	1			44	770140	O-ring	1	Lubricate with grease Molykote PG54	
6	2760180	Plug	3	Screw with Loxeal 55-14 / C=50Nm		45	2760640	Ring	1	anti-extrusion	
7	1200690	O-ring	4	Lubricate with grease Molykote PG54		50	2760780	Pump body	1		
8	2769050	Complete valve	6			51	801080	Screw	8	C=10,4Nm	
9	2760230	Fitting	1	Screw with Loxeal 55-14 / C=40Nm		52	1381550	Washer	8		
10	394280	O-ring	1	Lubricate with grease Molykote PG54		53	880130	Plug	1		
11	2760270	O-ring	1	Lubricate with grease Molykote PG54		54	1980740	Plug	1	C=20Nm	
12	1470210	O-ring	1			55	740290	O-ring	1	Lubricate with grease Molykote PG54	
13	2760120	Injector	1			56	2760281	O-ring	1		
15	2760130	Shutter	1			57	802190	Screw	4	C=8Nm	
16	2101770	O-ring	1	90 Sh		58	2760040	Piston	3	Lubricate with grease Molykote PG54	
17	1982520	Hose tail	1	Screw with Loxeal 55-14 / C=4Nm		59	1780050	Pin	3		
18	480480	O-ring	1			60	1780040	Connecting-rod	3	Lubricate with grease Molykote BR2 PLUS	
19	1250280	Ball	1			65	2760110	Cover	1		
20	1560520	Spring	1			75	1780490	Bearing	1		
21	2760220	Ring	3			76	1780550	Ring	1	seeger øe 20	
22	1342761	Water seal	3	Lubricate with grease Molykote PG54		77	1260790	Ring	1	seeger øi 52	
23	1981580	Ring	3	anti-extrusion		78	1266740	Cover	1		
24	1981570	Piston guide	3	Screw with Loxeal 55-14 / C=35Nm		85	1780270	Shaft	1	7 marked	
25	770260	O-ring	3			87	1321190	Bearing	1	Assemble with tool [1780610]	
26	1260440	Water seal	3	Lubricate with grease Molykote PG54		88	1321080	Ring	1		
27	640070	O-ring	3			89	480671	Ring	1	seal	Assemble with tool [1781000]
28	2760310	Spacer	3			A	2186	Valve kit	1		
29	1260460	Oil seal	3			B	2187	Piston kit	1	ø 15	
30	1060120	Nut	1	M6		C	2188	Oil seal kit	1		
31	392840	Screw	1	M6x16		E	2189	Water seal kit	1	ø 15	
32	2760480	Insert	1			F	2190	Gasket kit	1		
33	1980220	Plate	2			G	2191	Support ring kit	1	ø 15	
34	2760410	Spring	1	Lubricate with grease Molykote BR2 PLUS							
35	2760400	Piston	1								
36	2260100	O-ring	1	Lubricate with grease Molykote PG54							
37	660190	O-ring	1	Lubricate with grease Molykote PG54							
38	2760210	Ring	1	anti-extrusion							
39	2760050	Piston guide	1	Screw with Loxeal 55-14 / C=35Nm							

Revision: 1

Oil type: SAE 15W40

Attachment:

Date: 29/11/2021

Oil quantity: 0,300 Kg

C=Tightening torque (Tolerance +0 ÷ -10%)



Series 276

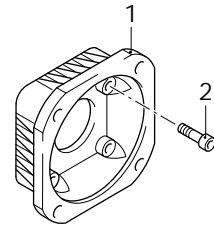
RSS

C

2800rpm

∅ 28mm

P	Code	Description		Q	Note	Validity
1	1380370	Flange	F16	1		
2	180030	Screw	TCEI M8x20	4	Screw with Loxeal 55-14 / C=24,5Nm	



F16

AR-1_000075_v01

Revision: 1

Oil type: SAE 15W40

Attachment:

Date: 29/11/2021

Oil quantity: 0,300 Kg

C=Tightening torque (Tolerance +0 ÷ -10%)

23396 - RSS 13.17 C + F16