



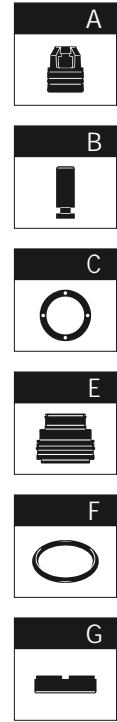
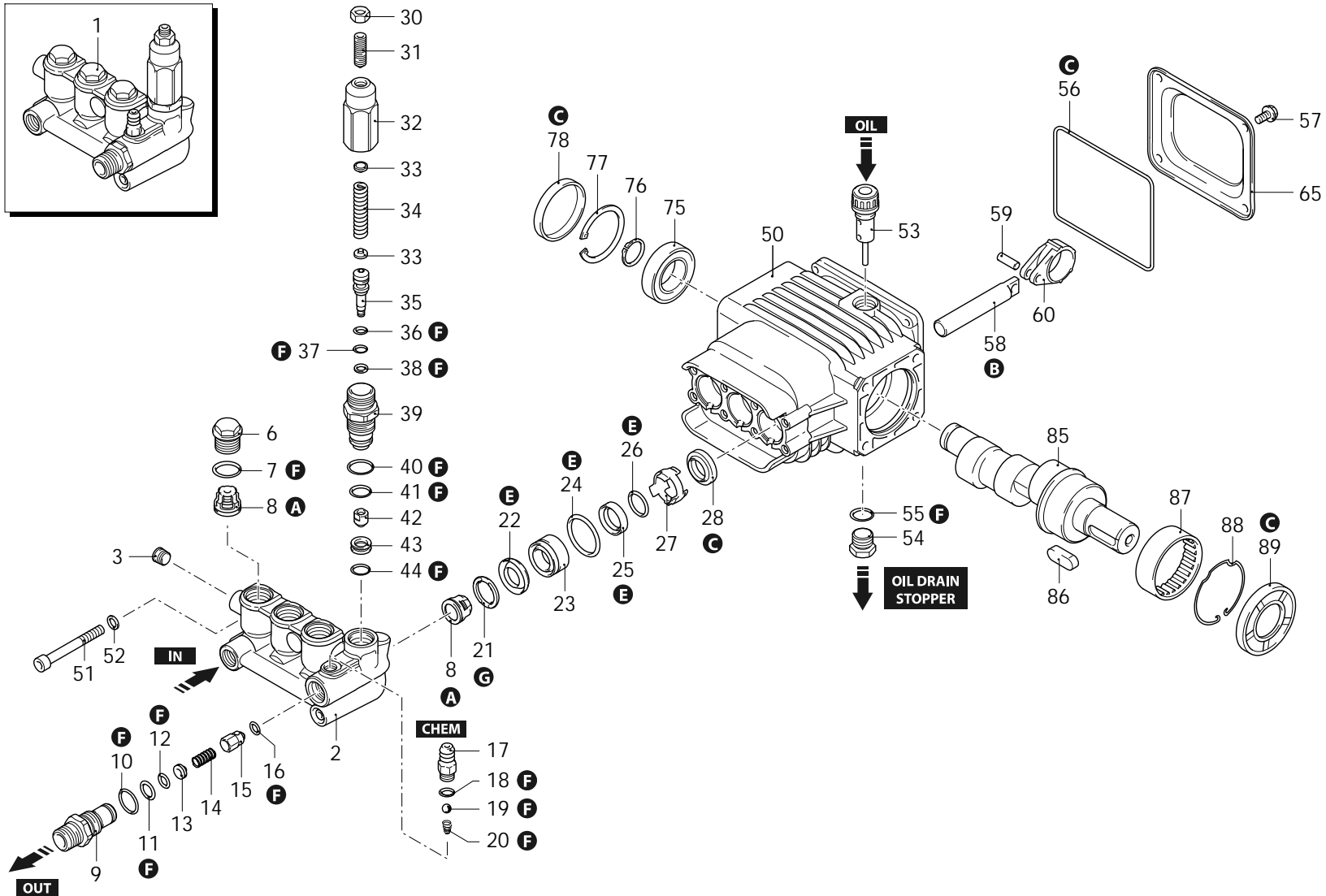
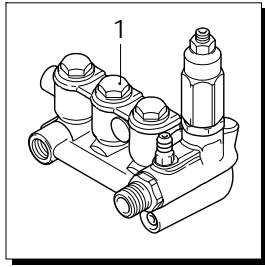
Series 276

RS

N

1450rpm

ø 24mm





Series 276

RS

N

1450rpm

ø 24mm

P	Code	Description	Q	Note	Validity	P	Code	Description	Q	Note	Validity
1	2769228	Head assembly	1			42	2260070	Shutter	1	Screw with Loxeal 55-14 / C=3Nm	
2	2760510	Head	1			43	2760090	Seat	1		
3	2760260	Plug	2	Screw with Loxeal 55-14		44	770140	O-ring	1	Lubricate with grease Molykote PG54	
6	2760180	Plug	3	Screw with Loxeal 55-14 / C=50Nm		50	2760460	Pump body	1		
7	1200690	O-ring	3	Lubricate with grease Molykote PG54		51	801080	Screw	8	C=10,4Nm	
8	2769050	Complete valve	6			52	1381550	Washer	8		
9	2760230	Fitting	1	Screw with Loxeal 55-14 / C=40Nm		53	880130	Plug	1		
10	394280	O-ring	1	Lubricate with grease Molykote PG54		54	1980740	Plug	1	C=20Nm	
11	2760270	O-ring	1	Lubricate with grease Molykote PG54		55	740290	O-ring	1	Lubricate with grease Molykote PG54	
12	1470210	O-ring	1			56	2760281	O-ring	1		
13	2760120	Injector	1			57	802190	Screw	4	C=8Nm	
14	2760200	Spring	1			58	2760450	Piston	3		
15	2760130	Shutter	1			59	1780050	Pin	3		
16	2101770	O-ring	1	90 Sh		60	1780040	Connecting-rod	3	Lubricate with grease Molykote BR2 PLUS	
17	1982520	Hose tail	1	Screw with Loxeal 55-14 / C=4Nm		65	2760110	Cover	1		
18	480480	O-ring	1			75	1780490	Bearing	1		
19	1250280	Ball	1			76	1780550	Ring	1	seeger øe 20	
20	1560520	Spring	1			77	1260790	Ring	1	seeger øi 52	
21	1780140	Ring	3			78	1266740	Cover	1		
22	1780720	Water seal	3	Lubricate with grease Molykote PG54		85	2760520	Shaft	1	7 marked	
23	1320351	Piston guide	3			86	650250	Key	1		
24	1260420	O-ring	3	Lubricate with grease Molykote PG54		87	1321190	Bearing	1	Assemble with tool [1780610]	
25	1260450	Water seal	3	Lubricate with grease Molykote PG54		88	1321080	Ring	1		
26	480440	O-ring	3			89	1260750	Ring	1	seal	Assemble with tool [1941990]
27	2760600	Spacer	3			A	2186	Valve kit	1		
28	2460170	Oil seal	3			B	42303	Piston kit	1	ø 18	
30	1060120	Nut	1	M6		C	42194	Oil seal kit	1		
31	392840	Screw	1	M6x16		E	42195	Water seal kit	1	ø 18	
32	2760480	Insert	1			F	2190	Gasket kit	1		
33	1980220	Plate	2			G	42196	Support ring kit	1	ø 18	
34	2760410	Spring	1	Lubricate with grease Molykote BR2 PLUS							
35	2760400	Piston	1								
36	2260100	O-ring	1	Lubricate with grease Molykote PG54							
37	660190	O-ring	1	Lubricate with grease Molykote PG54							
38	2760210	Ring	1	anti-extrusion							
39	2760050	Piston guide	1	Screw with Loxeal 55-14 / C=35Nm							
40	1200690	O-ring	1	Lubricate with grease Molykote PG54							
41	394280	O-ring	1	Lubricate with grease Molykote PG54							

Revision: 1

Oil type: SAE 15W40

Attachment:

Date: 29/11/2021

Oil quantity: 0,300 Kg

*C=Tightening torque (Tolerance +0 ÷ -10%)*